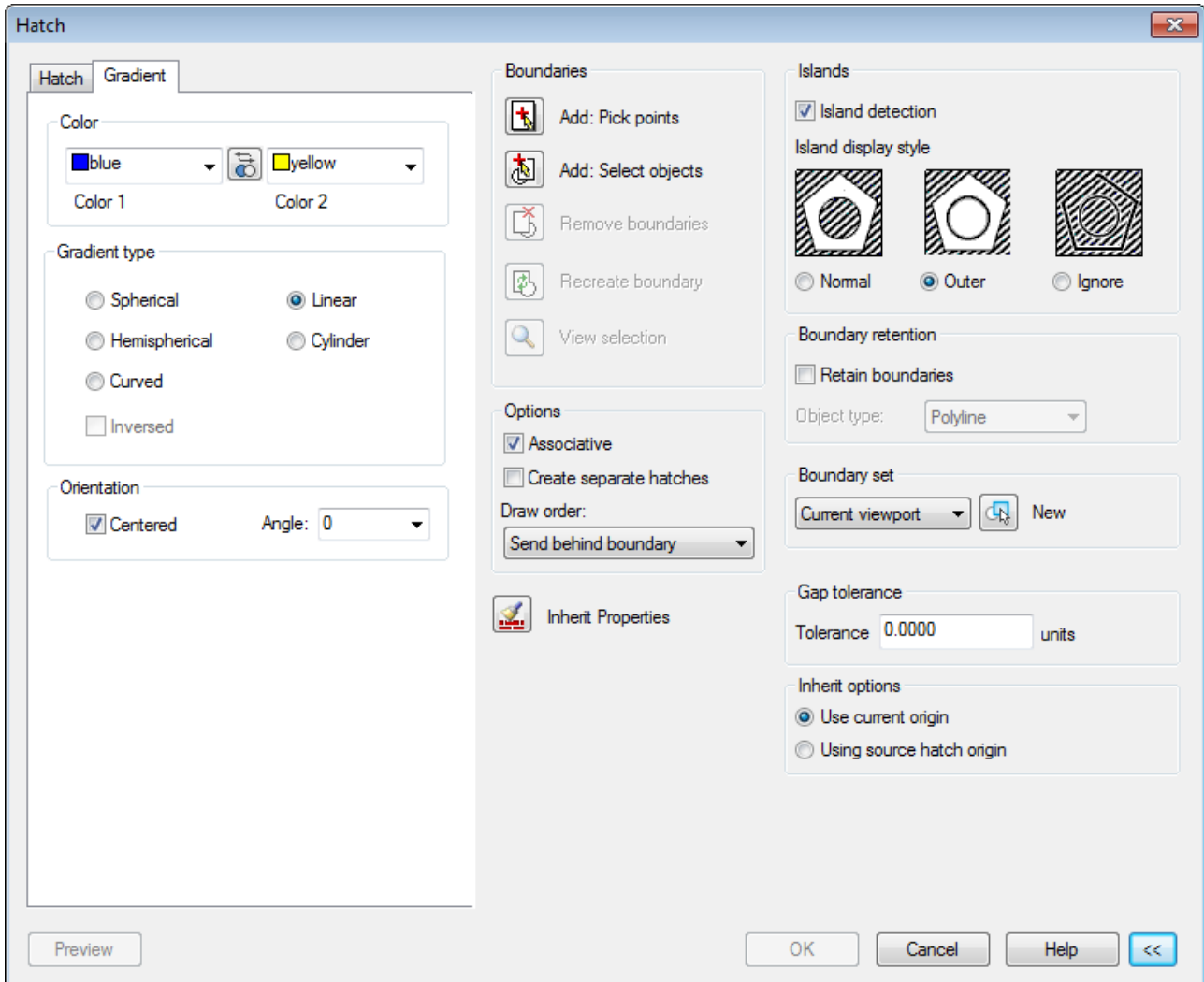
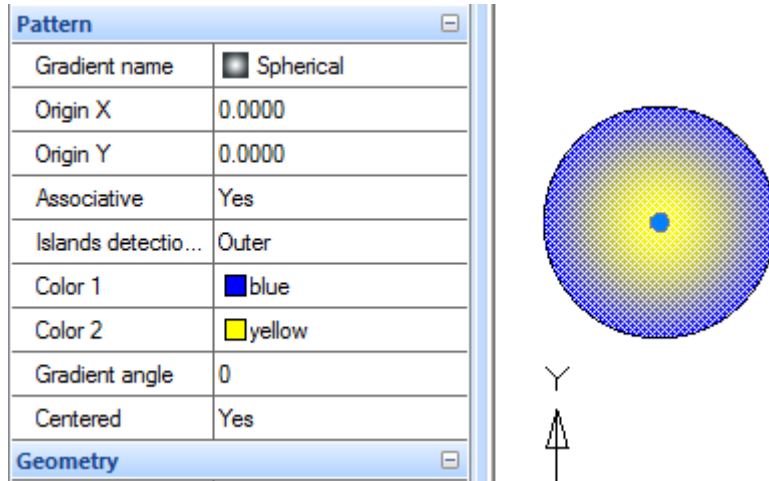


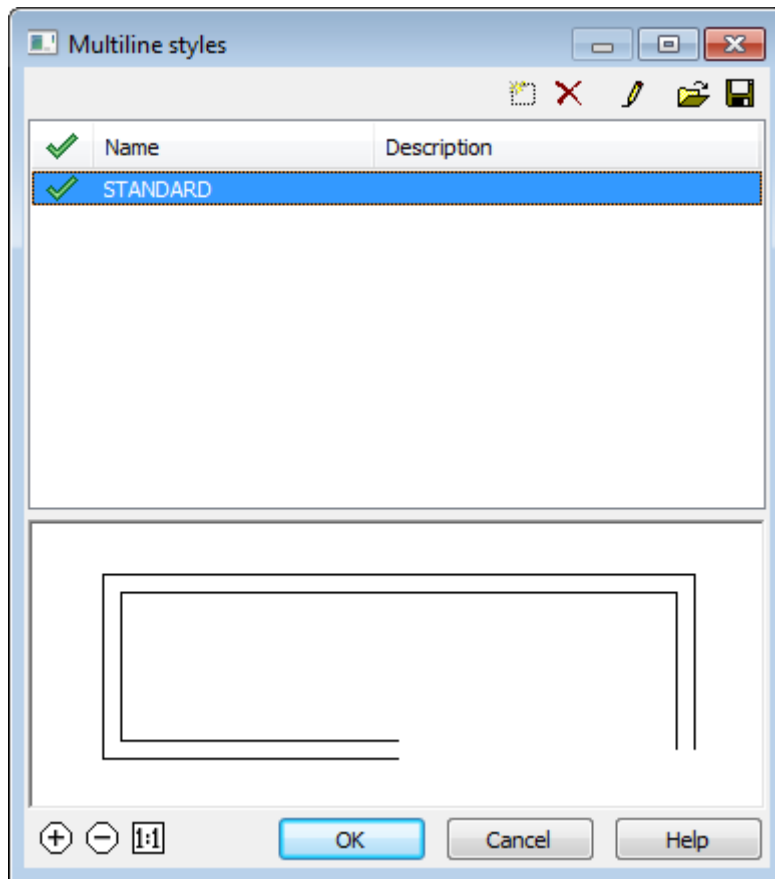
WHAT'S NEW IN NANOCAD PLUS 6.0

- **Donut** command.
- **Gradient** hatch.

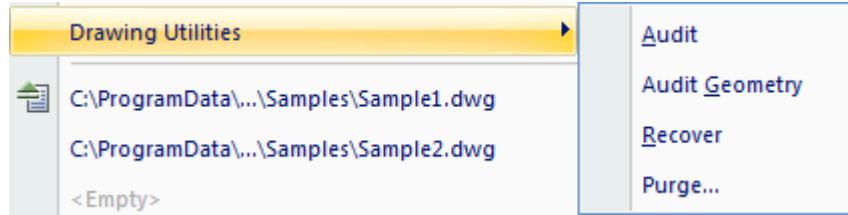




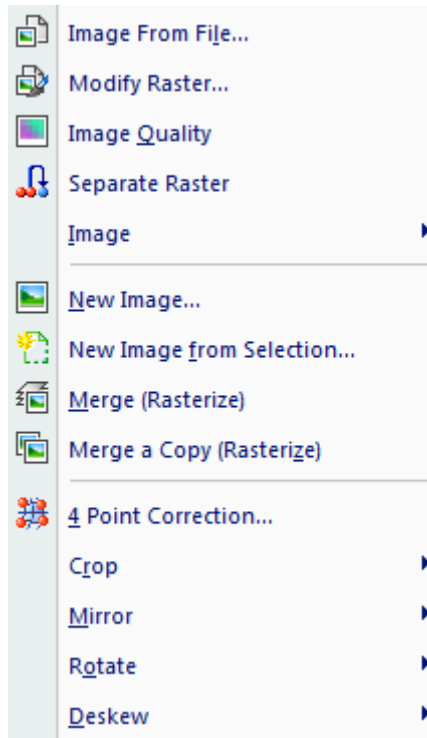
- **MultiLine** line type.
- **MultiLine Styles** dialog:



- **AuditGeometry** command with 2 modes:
 - **Check_Z_coordinate** – find objects with Z coordinate not equal 0 and set it to 0;
 - **Check_Hatches** – check and recalculate hatches boundary to fix problems.

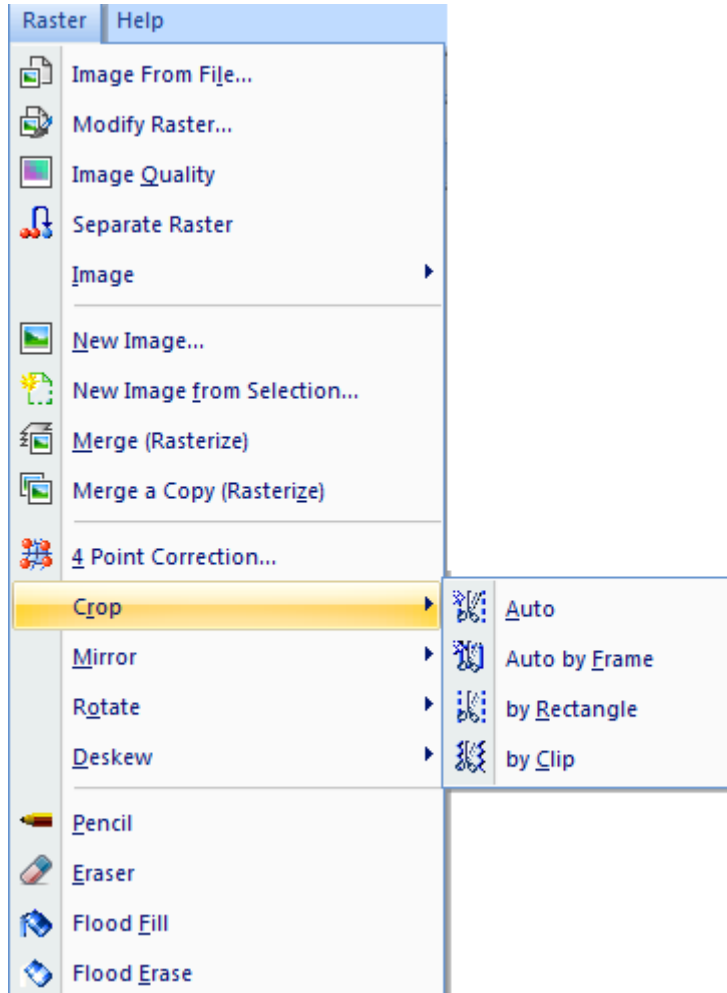


- More **Raster** functions:
 - Embedded Images
 - Rasterization for Vectors and Rasters.
 - **New Raster**
 - **New Raster From Selection**
 - **Rasterize – (Merge)**
 - **Rasterize a copy (Duplicate):**

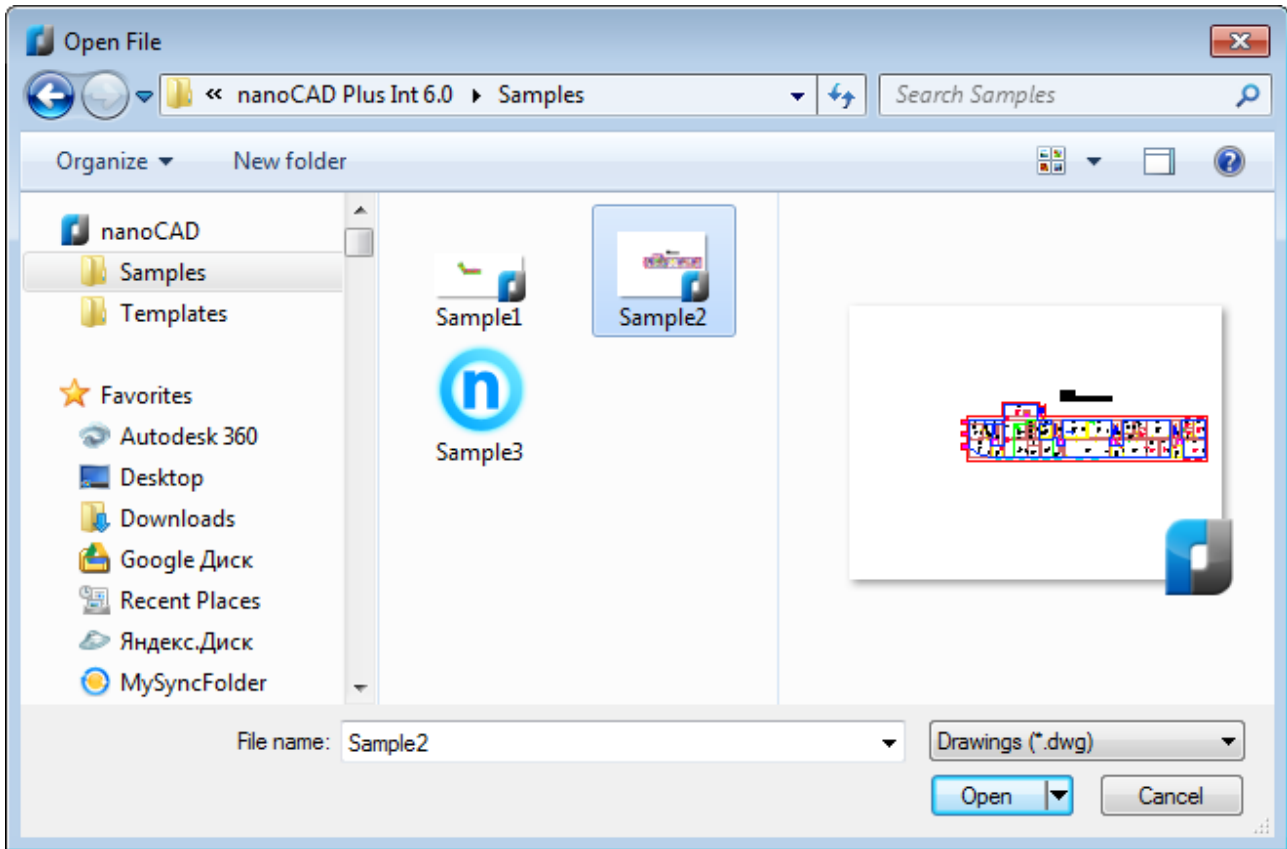


- **Image Quality** command to manage display quality for raster images.
- **Separate Raster** command to separate 2 insertions of the same raster image to independent images.

- New commands for Crop:
 - **Crop Auto (CropAuto),**
 - **Crop by Frame (CropByFrame),**
 - **Crop by Clip (CropByClip).**



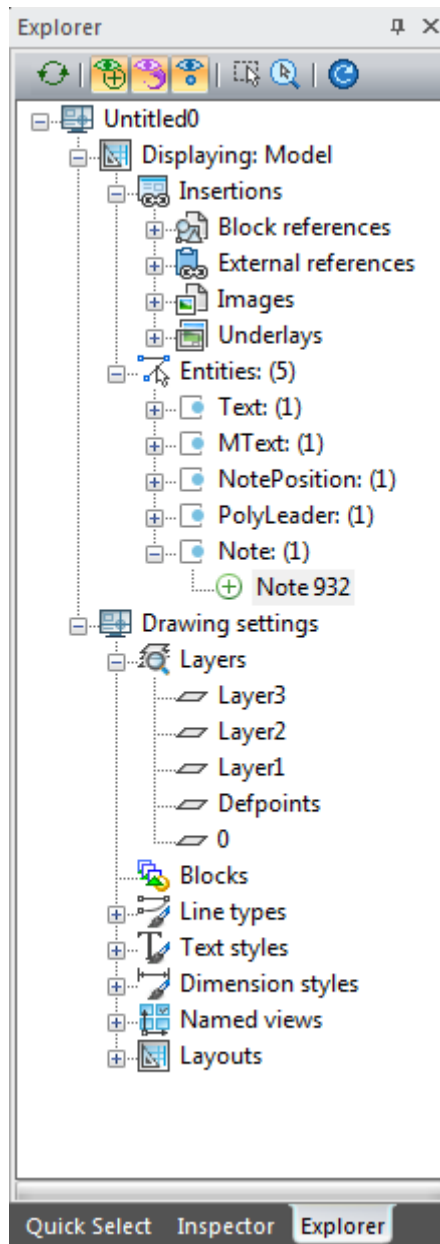
- New **File Open** and **File Save** dialogs with list of standard nanoCAD folders and preview area:



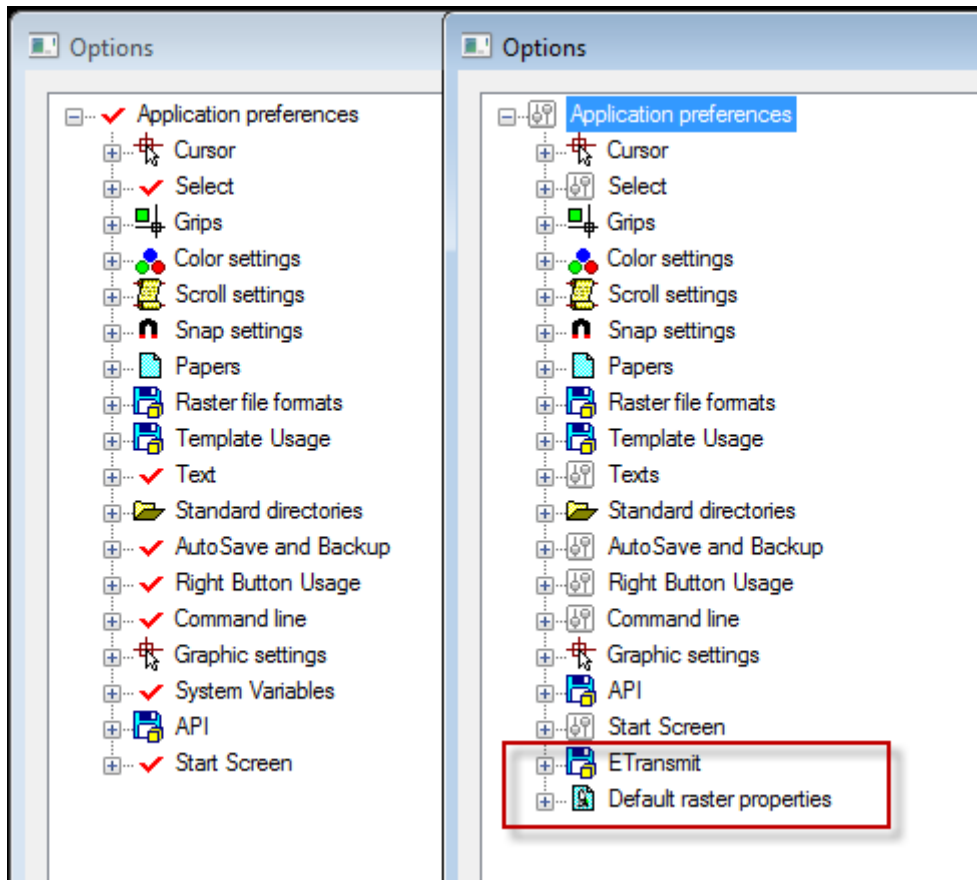
Note: in WinXP new dialogs are not supported.

- **Quick Text** command in **Modify – Advanced Tools** menu to switch draft mode for texts.

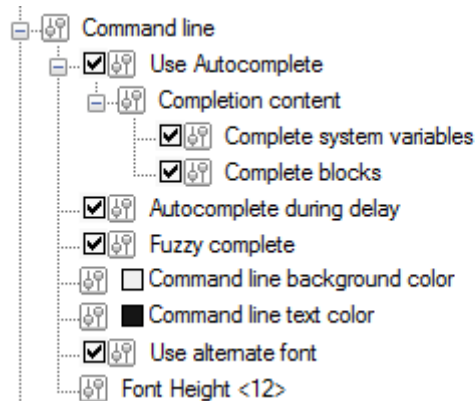
- **Drawing Explorer** displaying all information about objects and settings of the current document. Objects can be selected using Drawing Explorer and some operations are available using Right-button menu.



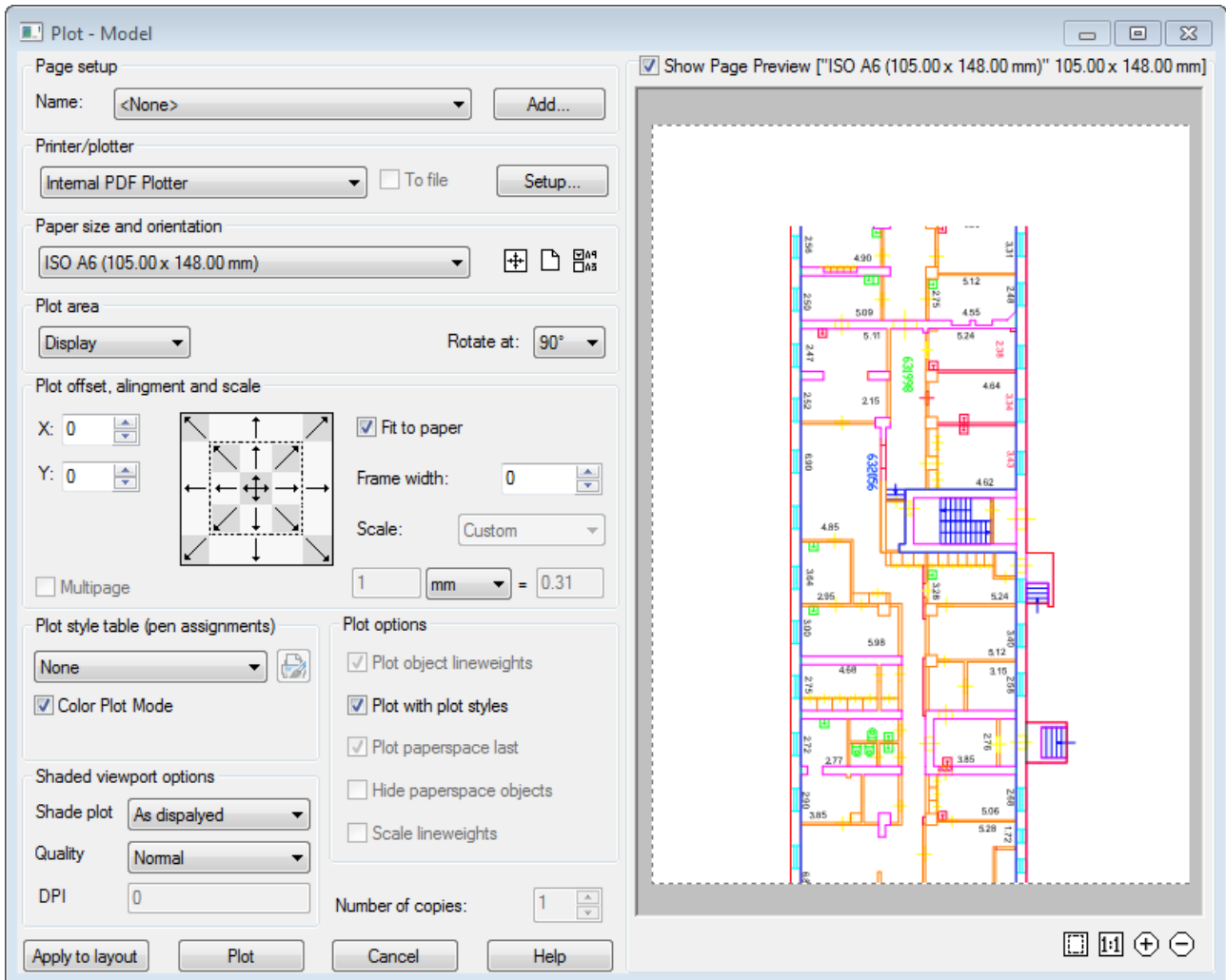
- Extended **Options** dialog:


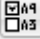


- **Common files location in Options – Standard directories.**
- Additional items for autocomplete function in Command line – Blocks and System Variables, "Fuzzy-logic" autocomplete and Delay setting for Autocomplete list.

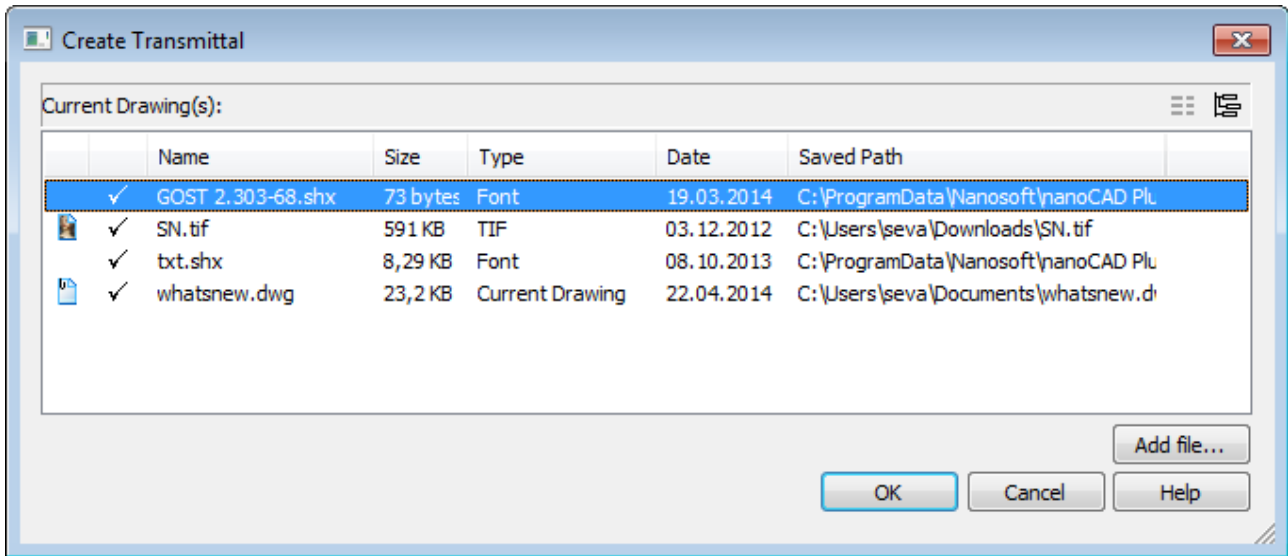


- Improved **Plot** command:
 - Page preview inside Plot dialog.

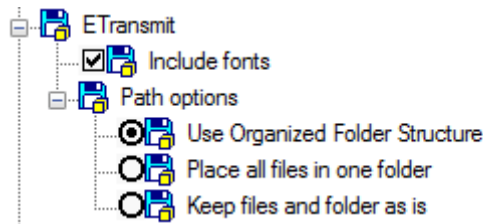


-  **Find nearest format** to automatically find optimal paper format for defined plot area and margins.
-  **Papers Filter** to edit list of paper formats.
- Rotation of the Plot area.
- Plot area alignment.
- Management Scales list using **SCALEUNITS** system variable.
 - **SCALEUNITS=0** for metric scales.
 - **SCALEUNITS=1** for inches scales.
 - **SCALEUNITS=2** for both lists.

- **ETransmit** command to prepare files set included all linked to drawing files like fonts, rasters or external links.

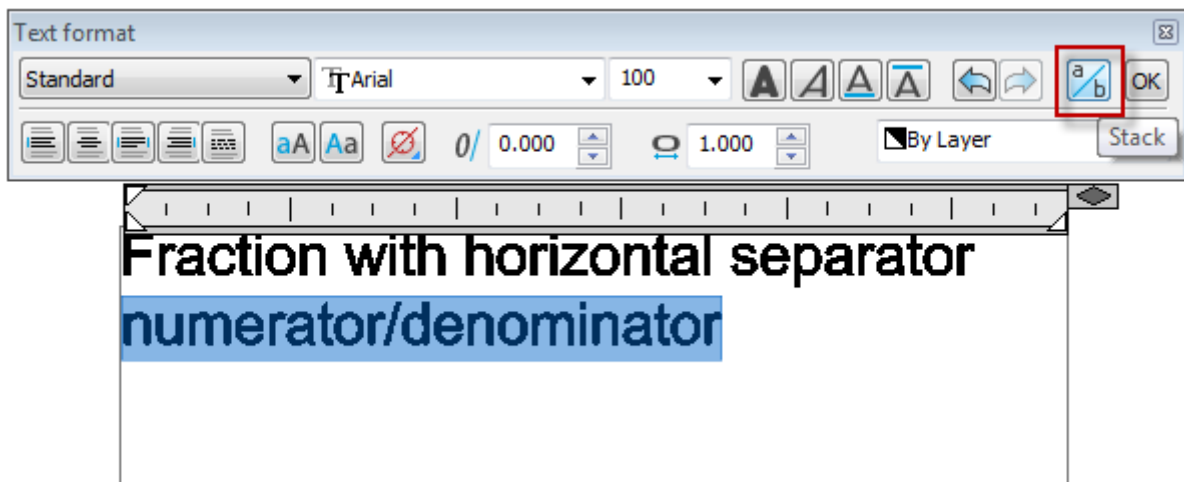


- ETransmit settings in **Options** dialog:

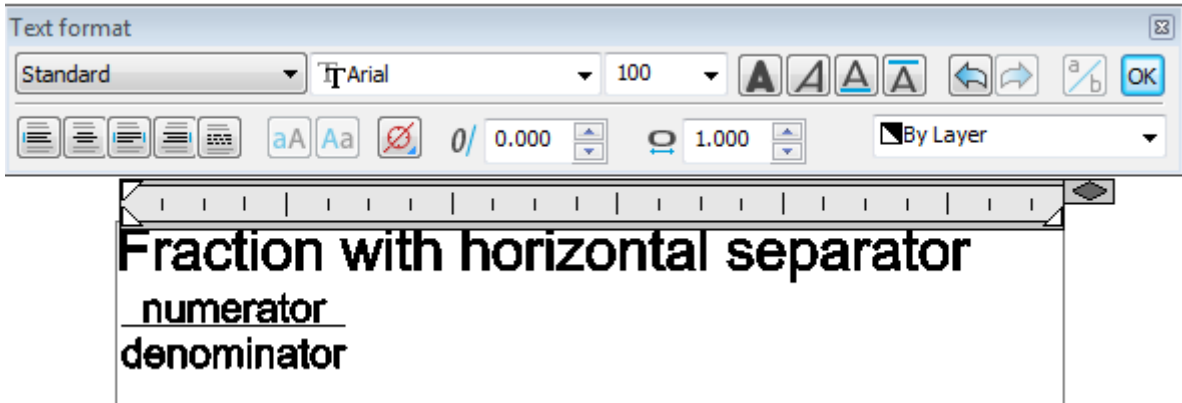


- Fractions with horizontal separator in Multiline Texts:

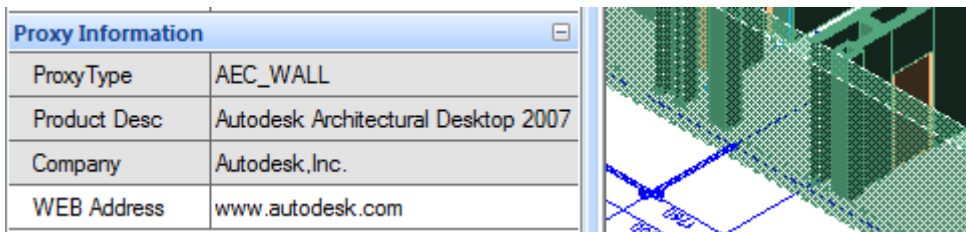
Before:



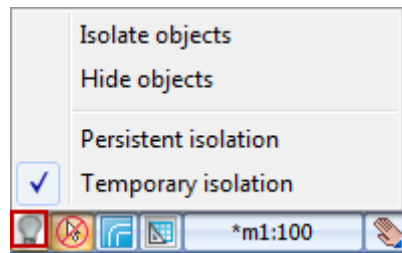
After:



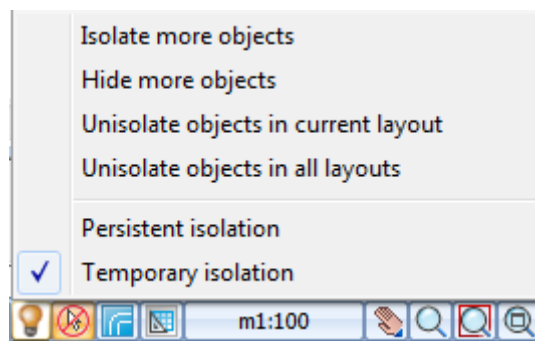
- **Proxy Objects** information in Inspector:



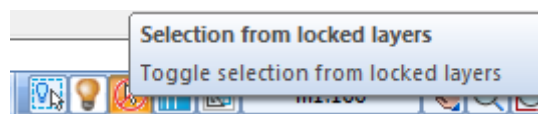
- **Toggle Isolate Objects** button:



If document contains any isolated object color of the lamp on the button changes to yellow and also context menu also changes:

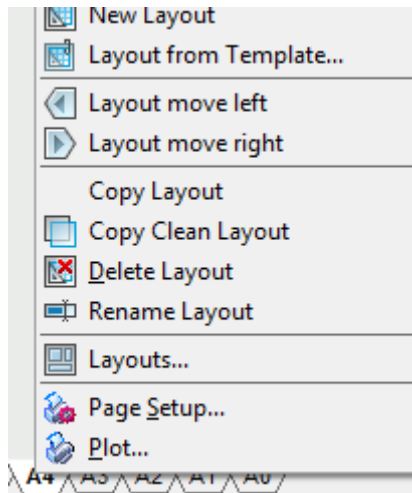


- Button to switch selection from locked layers mode:



- **QUICK SELECT** command now is also available as a panel. It can be shown/hided using **TABS** command.

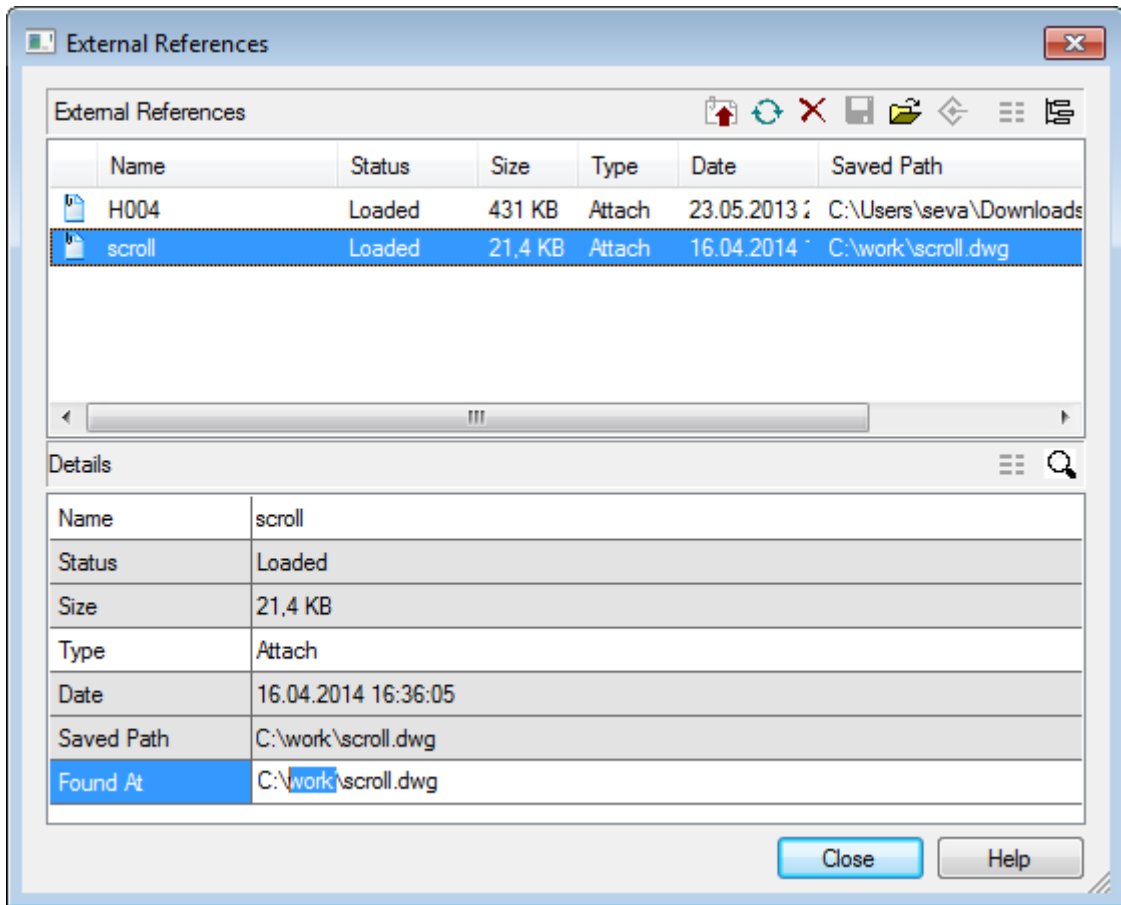
- **LAYOUTCLEANCOPY**, command creates copy of Layout with all objects excluding Viewports. It's also included to context menu:



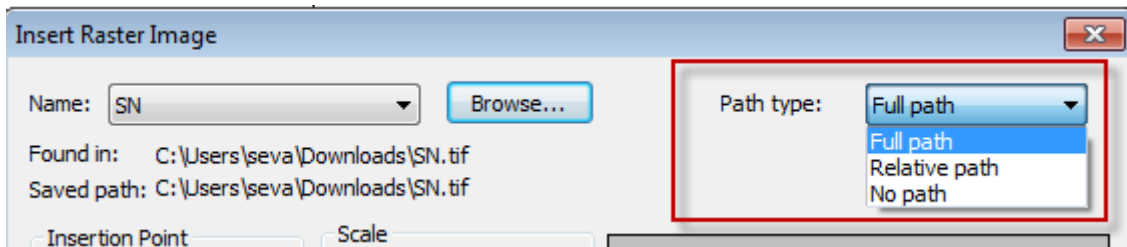
- **Dist** command: Measure distance using multiple points.

```
Command Line
Command: DIST
Specify second point or [Multiple points/]: Multiple points
Distance = 125.7487
Distance = 269.0862
Distance = 450.5783
Distance = 589.4933
Distance = 687.9096
Specify second point or [Undo/Total/] <Total> Total
Distance = 687.9096
Command:
```

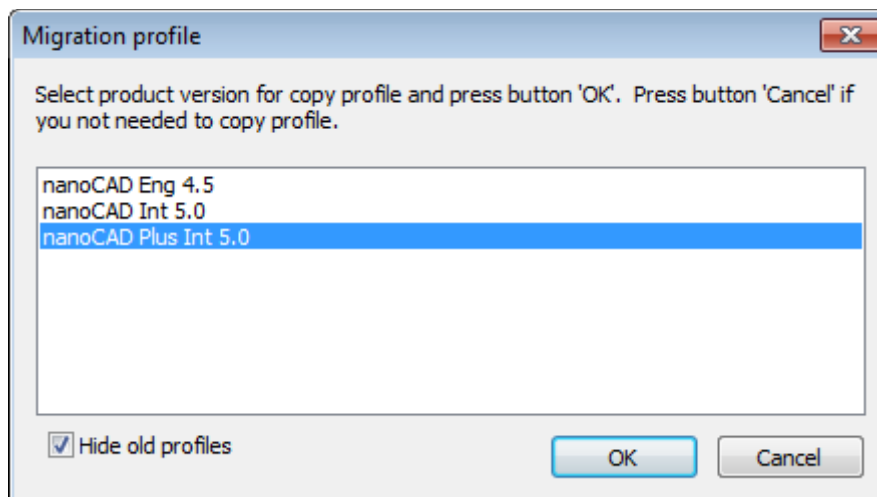
- Ability to edit path to file in **External References** dialog.



- Full or Relative path for Raster insertion:

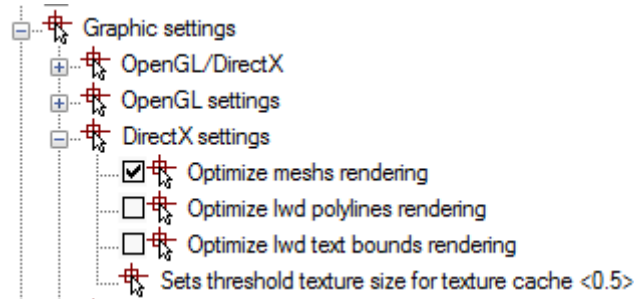


- Migration User settings from previous versions on first start.

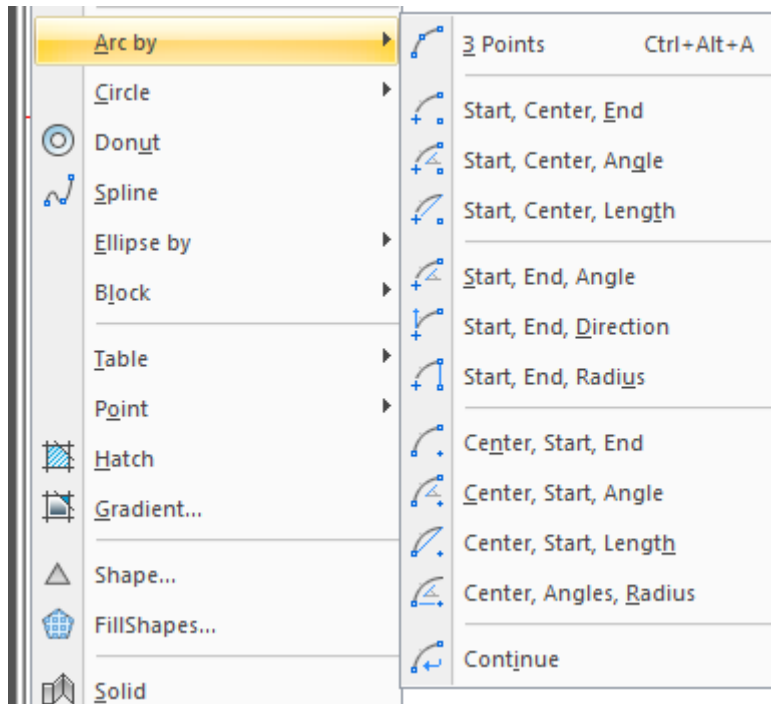


To restore standard settings for current version you can use **Reset All** button in **Customize** dialog.

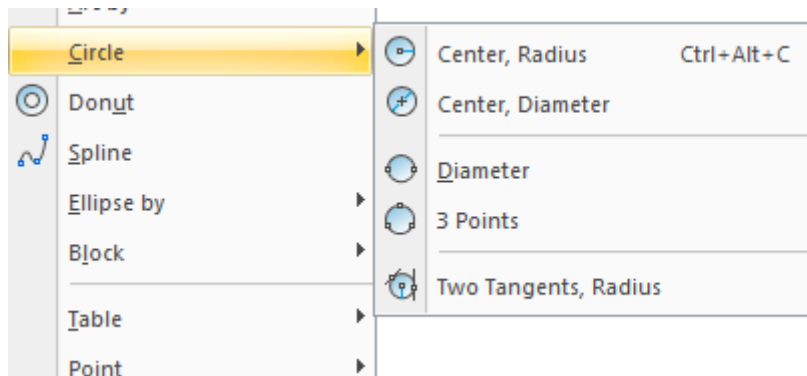
- Message and **Read Only** mark in Title bar for read-only documents or documents already opened by another user.
- New DirectX settings in **Options**



- DirectX added **Video subsystem performance check** command in **Help** menu.
- New menu items for **Arc** command.



- New menu items for **Circle** command.



- New **Startup Screen**.

